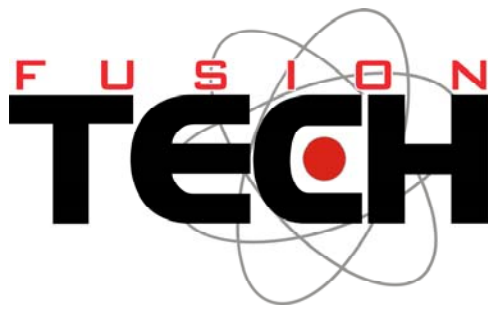


**Mfg Facility & Main Office**  
218 20th Ave  
Roseville, IL 61473  
Phone 309-774-4275  
Fax 309-774-4161

**Iowa Office**  
4300 South Lakeport Dr Ste 101  
Sioux City, IA 51106  
Phone 712-276-4701  
Fax 712-276-1106



[www.ftiinc.org](http://www.ftiinc.org)

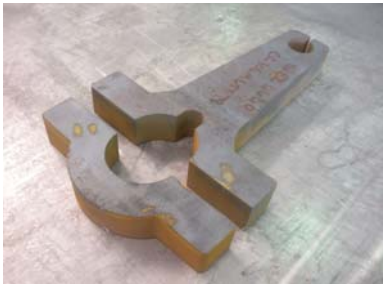
**Engineering**  
Brandon@ftiinc.org

**Machining**  
Dan@ftiinc.org

**Waterjet & Laser**  
Josh@ftiinc.org

**Project & Marketing Mgmt**  
Bryan@ftiinc.org

## CONCEPT to COMPLETION



Part profiles are waterjet cut or laser cut

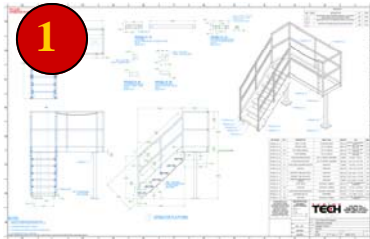


Our machining centers drill and tap the parts



Part is powder-coated, and assembled for shipment to client

### **Fusion Tech is your one-stop, turn-key supplier** **Eliminate paperwork from multiple vendors** **Reduce your shipping costs**



Our engineering & drafting departments utilize SolidWorks, AutoCAD, and Inventor and provide layout & design services, as well as reverse engineering



Our lasers and waterjets are programmed to cut flat patterns from the electronic files



Our CNC machinists perform machining operations such as countersinking, drilling, tapping, boring, facing, etc.



Parts are formed with our 230 Ton CNC Press Brake



Our AWS certified welders provide fabrication, and are TIG specialists



From drawing to real world. Final product is QC'd and ready for installation.



**Call Us**  
309-774-4275



**Fax Us**  
309-774-4161



**Visit Us**  
[www.ftiinc.org](http://www.ftiinc.org)